

#334H | Heather Undulating Waves Scarf

by Laura Nelkin



Materials

Schaefer Yarn Heather
(55% merino wool
SUPERWASH, 30%
cultivated silk, 15% nylon;
400 yards [366 m] / 4 oz
[113 g]), 1 skein
US Size 6 [4 mm] ndls
or size needed to obtain
gauge
4 st markers (2 color A, 2
color B)
100g size 6 glass beads
(1254 beads needed)
Sewing ndl
5" piece of sewing thread

Gauge

22 sts / 28 rows = 4" in pattern, blocked

Finished Measurements

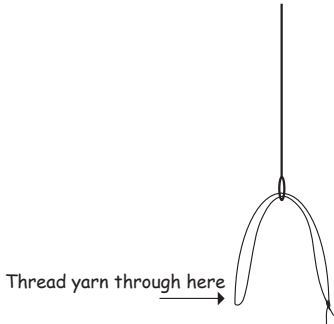
Approx. 6" wide x 49" long

Notes

Beads are placed on the yarn-overs. This is very easy to do: when the chart calls for a yo with bead(s) just slip that many beads up to the right ndl as far as they will go and then make the yo. When working yo's from previous rows, it is very important you follow the following instructions so that the beads lie properly on the floats:

#334H Heather Undulating Waves Scarf

(Page 2)



Rows 1-9

On RS, have bead(s) to the back of the left ndl when you knit the yarn over.
On WS, have bead(s) to the front of the left ndl when you purl the yarn over.

Rows 10-18

On RS, have bead(s) to the front of the left ndl when you knit the yarn over.
On WS, have bead(s) to the back of the left ndl when you purl the yarn over.

This pattern is fun and easy once you get into the groove of the repeat.

I put 25 grams of beads at a time onto the thread so that I didn't have to continue to move all 1254 beads down the length of the yarn as I worked the pattern. You can thread on as many as you'd like, just remember the more you thread on at each sitting, the fewer ends you will have to weave in later!

Scarf

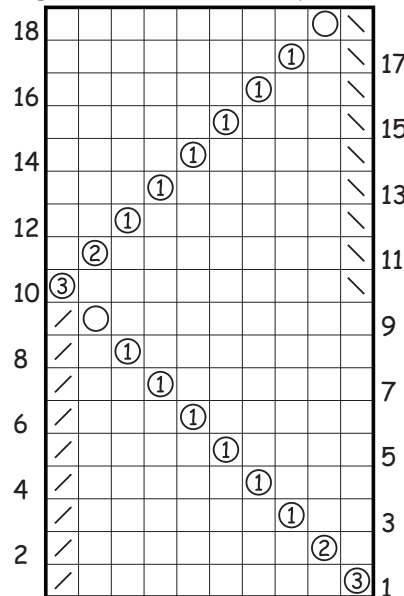
Take a sewing ndl and thread it with a 5" piece of sewing thread. Tie the bottoms of the thread together so that it makes a closed loop. Slip the ndl half way towards that knot. Slip the end of the knitting yarn through the folded end of the thread. (see diagram). String the beads onto the ndl, then the thread, and then the yarn. Keep stringing them on until you have at least 25 grams (1/4) of the beads on the yarn.

CO 38 sts.

K 3 rows.

Row 4: K4, pm A, k10, pm B, k10, pm B, k10, pm A, k4.

Beg to work chart, always knitting the first and last 4 sts.



- k1 (RS), p1 (WS)
- yo with no bead
- ① yo with 1 bead
- ② yo with 2 beads
- ③ yo with 3 beads
- / k2tog (RS), p2tog (WS)
- \ sl1, k1, pss0 (RS), p2tog tbl (WS)

Work Undulating Waves chart 19 times. When you run out of beads, break yarn and feed more onto the end of the yarn. Then reattach and continue in pattern.

K 4 rows. BO. Weave in ends. Block.

There is enough yarn make the scarf longer, you will just need to purchase more beads!

ABBREVIATIONS:

AH	armhole	dec	decrease	ndl(s)	needle(s)	rnd	round	WS	wrong side
beg	begin(ning)	est	established	p	purl	RS	right side	yo	yarn over
BH	buttonhole	inc	increase	pm	place marker	sl	slip st		
BO	bind off	k	knit	rem	remaining	st(s)	stitch(es)		
cn	cable needle	k1b	k 1 in back of st	rep	repeat	st st	stockinette st		
CO	cast on	meas	measures	rev st st	reverse st st	tog	together		